

Engineering Specification

Job Name _____

Contractor _____

Job Location _____

Approval _____

Engineer _____

Contractor's P.O. No. _____

Approval _____

Representative _____

LEAD FREE^{*}

Series 2000SS

Double Check Valve Assembly

2½" – 12"

Series 2000SS Double Check Valve assembly is designed to prevent the reverse flow of polluted water from entering the potable water system. This series can be applied, where approved by the local authority having jurisdiction, on non-health hazard installations. Features short end-to-end dimensions, lightweight stainless steel body, and low head loss. The OS&Y model includes an option for an integrated supervisory switch on each gate valve.

Features

- Cam-Check Assembly provides low head loss
- Short lay length is ideally suited for retrofit installations
- Stainless steel body is half the weight of competitive designs reducing installation and shipping cost
- Stainless steel construction provides long term corrosion protection and maximum strength
- Single top access cover with two-bolt grooved style coupling for ease of maintenance
- No special tools required for servicing
- Compact construction allows for smaller vaults and enclosures
- May be installed in horizontal or vertical "flow up" position (ASSE Only)
- Includes an integrated supervisory switch as an option on each gate valve of the OS&Y model

NOTICE

The information contained herein is not intended to replace the full product installation and safety information available or the experience of a trained product installer. You are required to thoroughly read all installation instructions and product safety information before beginning the installation of this product.

Inquire with governing authorities for local installation requirements.

*The wetted surface of this product contacted by consumable water contains less than 0.25% of lead by weight.



2000SS-OSY with supervisory switches

Specification

A Double Check Valve assembly shall be installed at each noted location to prevent the unwanted reversal of polluted water into the potable water supply. The main valve body shall be manufactured from 300 Series stainless steel to provide corrosion resistance, 100% lead free through the waterway. The double check shall consist of two independently operated spring loaded cam-check valves, required test cocks, and optional inlet and outlet resilient seated shutoff valves. Each cam-check shall be internally loaded and provide a positive drip tight closure against the reverse flow of liquid caused by backsiphonage or backpressure. The modular cam-check includes a stainless steel spring and cam-arm, rubber faced disc and a replaceable seat. There shall be no brass or bronze parts used within the cam-check valve assembly. The valve cover shall be held in place through the use of a single grooved style two-bolt coupling. The main assembly shall consist of two independently operating torsion spring check assemblies, two resilient seated isolation valves, and four ball valve type test cocks.

The integrated supervisory tamper switch, an option on the OS&Y model, shall have continuity with the valve fully open and activate within two (2) turns from open. The device consists of two SPDT switches and is designed to send a tamper signal when the valve is closed and when the switch is removed from the valve. In the neutral position, the switch indicates the valve is fully open. Closing the valve causes the switch rod to come out of the valve stem groove, activating the switch. Removing the tamper switch also activates the switch. The assembly shall be an Ames Fire & Waterworks Series 2000SS.

Ames Fire & Waterworks product specifications in U.S. customary units and metric are approximate and are provided for reference only. For precise measurements, please contact Ames Fire & Waterworks Technical Service. Ames Fire & Waterworks reserves the right to change or modify product design, construction, specifications, or materials without prior notice and without incurring any obligation to make such changes and modifications on Ames Fire & Waterworks products previously or subsequently sold.



Materials

All internal metal parts 300 Series stainless steel
 Main valve body 300 Series stainless steel
 Check assembly Noryl®
 Flange dimension in accordance with AWWA Class D

Standards

AWWA C510-92, CSA B64.5

Approvals



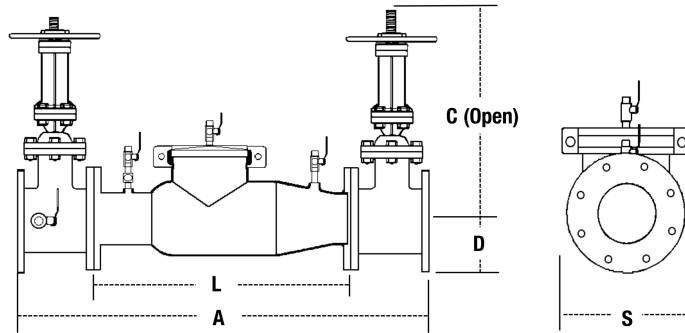
Available Models

NRS Non-rising stem resilient seated gate valves
 OSY UL Classified and FM Approved outside stem and yoke resilient seated gate valves
 TS-OSY Integrated supervisory switch (UL Certified, Safety Signaling, Control No. 3L38) on outside stem and yoke resilient seated gate valve
 OSY FxG** Flanged inlet gate connection and grooved outlet gate connection
 OSY GxF** Grooved inlet gate connection and flanged outlet gate connection
 OSY GxG** Grooved inlet gate connection and grooved outlet gate connection
 LG Less gates

Pressure – Temperature

Temperature Range: 33°F – 110°F (5°C – 43°C)
 Maximum Working Pressure: 175 psi (12.06 bar)

Dimensions – Weights



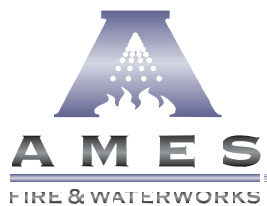
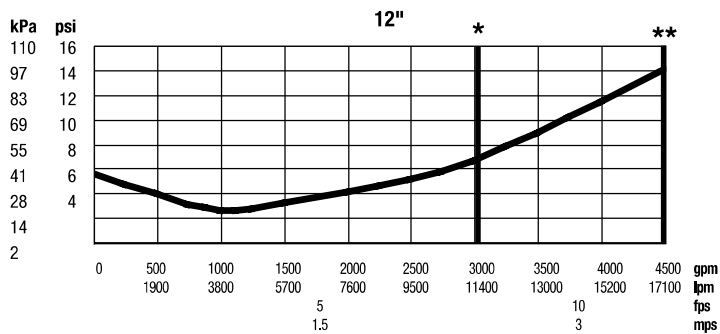
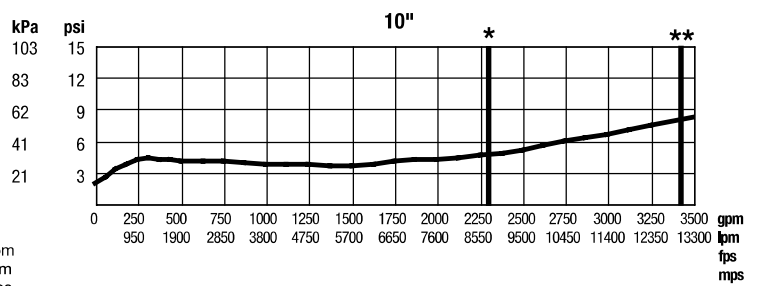
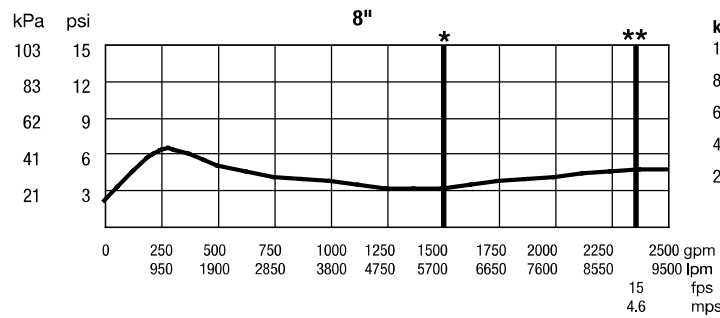
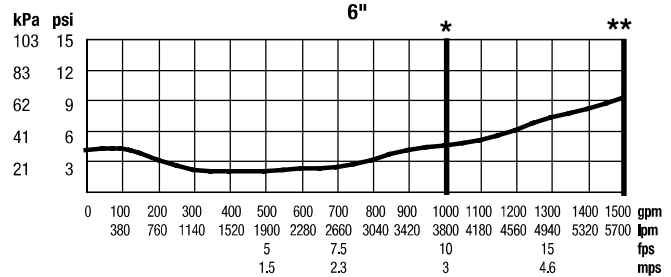
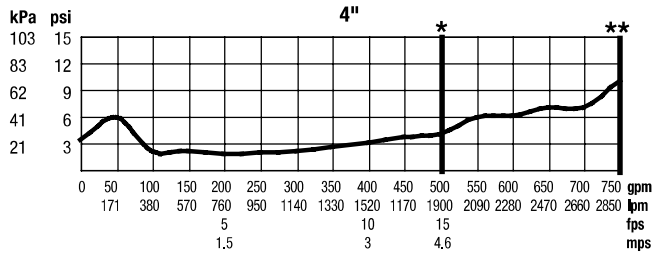
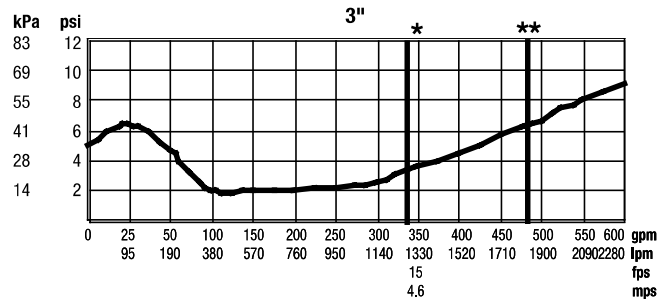
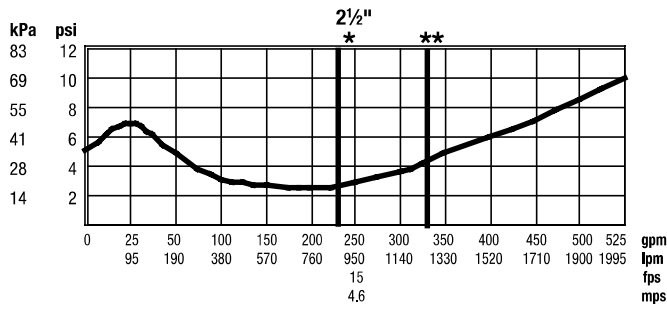
SIZE	DIMENSIONS										WEIGHT					
	A		C (OSY)		C (NRS)		D		L		S		With Gates		Without Gates	
in.	in.	mm	in.	mm	in.	mm	in.	mm	in.	mm	in.	mm	lb	kg	lb	kg
2½	37	965	16¾	416	9¾	238	3½	89	22	559	7	178	145	66	53	24
3	38	965	18¾	479	10¼	260	3¾	95	22	559	7½	191	220	100	55	25
4	40	1016	22¾	578	12¾	310	4½	114	22	559	9	229	230	104	58	26
6	48½	1232	30¾	765	16	406	5½	140	27½	699	11	279	380	172	105	48
8	52½	1334	37¾	959	19½	506	6¾	171	29½	749	13½	343	566	256	169	77
10	55½	1410	45¾	1162	23½	605	8	200	29½	749	16	406	768	348	179	81
12	57½	1461	53¾	1349	26¾	679	9½	241	29½	749	19	483	1038	471	209	95

Noryl is a registered trademark of SHPP Global Technologies B.V.

** Consult factory for the following: Grooved NRS gate valves, post-indicator plate and operating nut, dimensions

Capacity

Rated working pressure 175 psi (12.06 bar) * Rated flow **UL Tested



A WATTS Brand

USA: Backflow T: (978) 689-6066 • AmesFireWater.com
 USA: Control Valves T: (713) 943-0688 • AmesFireWater.com
 Canada: T: (888) 208-8927 • AmesFireWater.ca
 Latin America: T: (52) 55-4122-0138 • AmesFireWater.com